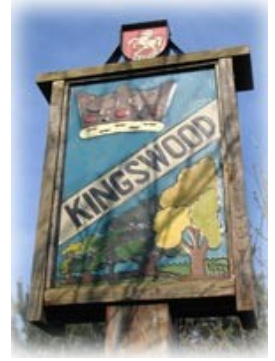




Broomfield and Kingswood Parish Council
www.broomfieldandkingswood-pc.org.uk



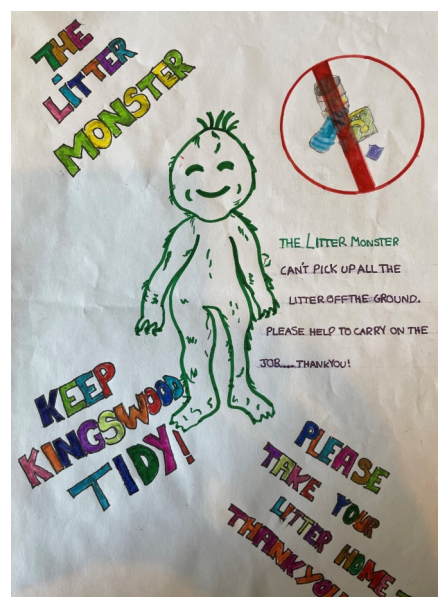
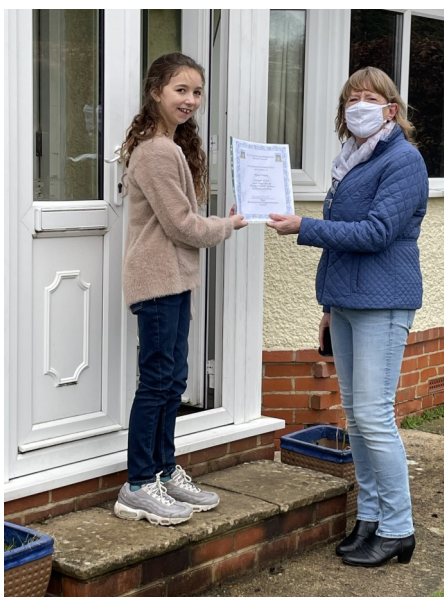
Parish News

Spring 2021

Litter Poster competition
We have 2 winners:
Under 7 age group: Brooke Cloke



Over 7 age group: Anya Hales



A huge well done and thank you to everyone who entered the competition.

PARISH COUNCIL UPDATES

PARISH COUNCIL ACTION PLAN

Broomfield and Kingswood Parish Council aims to provide their residents with a clear understanding of the Council's priorities and objectives for the coming Council year. Whilst some of the issues facing the parish are areas not directly under the control of the Council, the Parish Council will seek to use its influence to ensure that other providers also respond to the needs and aspirations of the residents.

The Action Plan is a statement of the Parish Council's intentions over the next year and will be subject to monitoring at Parish Council meetings.

The 2021 Action Plan can be viewed on the Parish Councils website via the following link:

[Action Plan - Broomfield & Kingswood Parish Council - Broomfield & Kingswood Parish Council, Kingswood, Maidstone \(broomfieldandkingswood-pc.org.uk\)](http://broomfieldandkingswood-pc.org.uk)

Please take a look and if you would like to see something added to it then let the Clerk know. Councillors would welcome your contribution

DOG FOULING IN THE VILLAGE AND THE SPORTS FIELD

Sadly many dog owners are still not picking up their dog mess around the village and the sports field.

Not only is this an unpleasant sight, but it is also a health hazard and is associated with various diseases including Toxocara Canis which causes stomach upsets, sore throats and asthma.

PLEASE DO NOT LEAVE YOUR POO BAGS IN THE PLANTERS OR

DISCARD THEM ON THE STREETS OR HANG THEM FROM A TREE. MORE BINS HAVE BEEN PLACED AROUND THE VILLAGE

USE THEM!

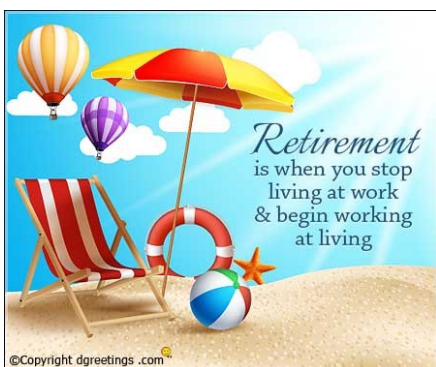
Information on dog foul offences you witness can be reported to Maidstone Borough Council using the following link:

<https://maidstone.gov.uk/home/other-services/campaigns-and-projects/tier-2-primary-areas/rk9>

Or forwarded directly to

Jack Orwell, Maidstone Borough Council's Waste Crime Team Officer so that he can investigate and take enforcement action.

Jack can be contacted via email at jackorwell@maidstone.gov.uk or by phone 01622-602232



TIME TO SAY GOODBYE

For those that don't already know, I am retiring and leaving the village hopefully in March to move to Derbyshire.

I have thoroughly enjoyed my time as Parish Clerk and would like to thank you for your support over the years. We are currently recruiting for a new Clerk and hope to have one in place by the end of March.

Pam Bower
PARISH CLERK

Telephone: 07719 317702/01622 843741

Email: parishclerk@bandkpc.org

Website: www.broomfieldandkingswood-pc.org.uk

INCIDENTS AND ISSUES MUST BE REPORTED

It is really important any issues are reported on-line. The Police, including our PCSO, **can only respond** to incidents and issues if they are reported to 101 or on-line

If issues/crimes are not reported the Police cannot respond and the Parish Council has no enforcement capabilities.

You must report things on the reporting section of the Kent Police website which can be accessed via the following link or ring 101:

<https://www.kent.police.uk/ro/report/>

Please **do not** post any evidence that could be used in a criminal prosecution on the Facebook site as it could also cause residents distress and worry and it could be scaremongering

Please remember that our **PCSO is not contactable by phone.**

Highways issues including potholes, broken signs, damaged signs, blocked gullies, pathway issues

<https://www.kent.gov.uk/roads-and-travel/report-a-problem>



We have all missed our termly sessions full of fun activities and memories for all, missed out on saying goodbye and good luck to some of our older children who attended that are now in their Primary School settings.

We have missed out on so much but are so pleased all are keeping safe and well during these testing times. We have had to put a lot on hold to make sure everyone is as safe as possible and we thank you for your continued support.

We are now looking forward to the up-and-coming months after hearing the latest news from the government about the 'road map' out and what that means for us moving forward.

29 March:

- Parent and child groups can take place **outdoors** with a limit of 15 attendees (children under five years of age do not count towards the attendee limit).

12 April (at the earliest):

- Parent and child groups of up to 15 people (not counting children aged under five years old) can restart **indoors**.

We anticipate a lot of change and adaption will be made to make the group work safely and affectively but we will keep you all updated when we know how and when we can move forward as safely as possible.

In the mean-time continue to stay safe and we look forward to seeing you soon for more fun, activities, songs and lots of laughter. Aimee and team x



Would you like to promote your business?

Then consider advertising in this Magazine

Contact

**Pam Bower
Parish Clerk
parishclerk@bandkpc.org
01622 8435471
07719 317702**

If you have a poem or article you would like included in the next Parish News, please let your Parish Clerk know.



Update on Our Community Building

You may recall that the Spring 2020 Parish News had a bold invitation on the front cover. Your Parish Councillors were ready to deliver a presentation to you about their plans for a Community Building in the village hall on Saturday 21st March. Little did they know what was to come!

What a year we have all had and, and whilst writing this, still no news about coming out of lockdown number three!

So we thought we would give you a bit more news about where we are currently with the project as proposals and costs have changed somewhat.

The building itself

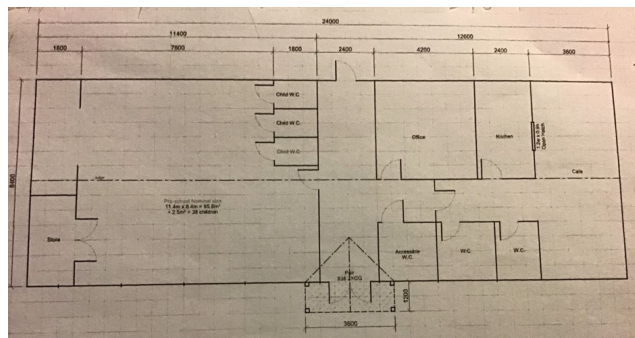
We are now proposing a type of building that is commonly seen used as sports pavilions at cricket clubs, bowls clubs and the like. The building would be timber framed with double glazed UPVC windows and timber doors all adequately protected against break-ins when not in use. The building dimensions would be 8.4m by 24m overall as proposed.

It would comprise a community hall at one end used during school hours as a pre-school classroom with break out to a secure open playground. The room houses separate toilets for children only. This room would be available after school and evenings/weekends for community meetings, events, or activities.



At the other end of the building, it is proposed to site a kitchen and dining area used as a café during the day for visitors to the sports field and otherwise for use by the community if needed for meetings, activities, or events. It may also have an outside paved patio area for tables and chairs for use during the summer.

Between these main two areas we propose to house an office for the use of the Parish Clerk and the Responsible Finance Officer, the two paid officers of our Council who currently work from home. The office would also provide an ideal place for parishioners or suppliers/contractors to meet our Parish Clerk and/or councillors if required which is currently problematic. In this area we also propose to provide toilets, changing rooms and baby change facilities which may be entered either from inside the building or from outside depending whether the building is open or closed at the time.



Siting the building and planning

As already advised, we propose the building to be sited on our sports and recreation field on the Lenham Road although the precise location within the area is not yet finalised, albeit that it will be adjacent to or near the car parking area.

Within our planning application we need to convince the local authority:

- that we are unable to site the building elsewhere in the parish;

- that our building does not drastically impair our sports and recreation facility;
- of the need for sports pitches and the adequate provision for the need identified;
- that we are not siting the building too close to ancient woodland (which borders the field all around);
- that any noise generated by the proposed use does not adversely impact the neighbouring properties and finally
- that the use of the proposed community building does not drastically affect traffic along the Lenham Road at the junction to the sports and recreation ground.

Costs

At the time of writing this article new costings are being carried out because it is clear that the building currently being considered is less expensive than the one originally proposed. This does not mean that the new building will be inferior or not fit for the intended purpose, just that it is equally in line with requirements and a better aesthetic fit for the intended location.

Funding

It was originally stated that we may obtain grants up to the value of 50% of the costs and we are currently in the process of applying for a share of the UK Shared Prosperity Fund (UKSPF) announced recently by Robert Jenrick, Secretary of state for Housing, Communities and Local Government, who suggested that the fund “will have localism and local government at its heart”.

Whilst writing this it is not clear what the criteria are or how much funding may be available for projects like this.

We will be applying for 50% of the new costs not knowing if the application is appropriate to this funding stream but we can only try!

The other 50% or more, failing our application above, will come from a loan from the Public Loans Board and will be repaid (as already advised) from the Parish Council precept. More to be advised on this when more details are known. However, we can say that costs are less than half the original budget.

Carbon Footprint

As a Parish Council we like the idea of being able to offset our carbon footprint by generating some of the electricity needed by the new build from solar panels or wind turbines. However, we are conscious that the risk of vandalism may play its part in preventing us from considering this further.

Local trades

This is a local project, and we intend to use local tradesman wherever possible. When we are in a position to need quotations for work, we will advertise that we want interested parties to contact the working group to initially express their interest. This will enable suitability to be established and a list of contractors to be made.

The Community Building Working Party

This building will belong to the Parish Council on your behalf but Councillors can only take the project so far.

At some point in the not too distant future the committee of Parish Councillors currently overseeing the project, will need to hand over to a new group of volunteer parishioners to be called The Community Building Working Party. They will be responsible (together with the Parish Council as a whole and interested parties) for seeing the project through to a successful conclusion.

Parish Council Community Building Committee
February 2021

Kingswood Preschool group in 2021



Kingswood Preschool has remained open to all children during this second lock down. As in the previous lockdown we have put in place extra measures to ensure our systems of control are rigorous and thorough. We have invested in special hand washing stations made here in the village by Martin Worrall for the children to wash their hands regularly and independently throughout the day.

We are extremely grateful for the continuing support from our families and committee members during what has been a difficult year. The staff team at Kingswood Preschool have been nothing short of outstanding and have worked tirelessly to keep our setting running under challenging circumstances. We are now lucky enough to have our very own virtual tour which can be accessed via our website or Facebook page.

During this new lockdown we been paying particular attention to the wildlife we see around us. Looking out for common birds and encouraging them into our space with special bird feeders. We have invested in two bug hotels ready for the spring and hope to add a couple of bird boxes in the grounds so we can continue to observe the world around us.

We have been learning new songs and rhymes focussing on counting. The children have been using a diverse selection of instruments, exploring how sounds can be changed and following a simple beat. The children are continuing with two new exciting activities this coming term one to promote hand-eye coordination and hand strengthening. The other promotes wellbeing, listening, flexibility and whole body control.

We are excited about this coming term and hope soon we will be out of lockdown, receiving new children waiting to start. Kingswood Preschool does currently have some spaces for children waiting to go to school in September. We have a small number of spaces for 2 year olds wishing to have a place in the coming terms but we already have a waiting list moving closer to the Summer term.

Kingswood preschool would love to hear from you if you are interested in a place in the future. Please contact Katherine Ross (Manager) via email manager@kingswoodpreschoolgroup.co.uk to get started.

PUZZLE CORNER

SODOKU

	6			4		1		5
3			5			8	4	
							2	7
6			3		1	5		
	7	5				6	3	
		3	6		9			2
4	3							
	1	7			4			3
8		6		3			1	

POP THE QUESTION

Name the pop group from the following cryptic clues:

1. Jungle Swingers
2. Initial Layer of Buildings
3. Vehicles on the roads
4. Birds of prey
5. Triple Soaking
6. Lad's area

LET ME THINK?

1. A sundial has the fewest moving parts of any timepiece. Which timepiece has the most?
2. You're in a dark room with a candle, a wood stove, and a gas lamp. You only have one match, so what do you light first?
3. What is unusual about these words: revive, banana, grammar, voodoo, assess, potato, dresser, uneven?



Leeds & Kingswood Scout Group

WOULD YOU LIKE TO BE A LEADER OR HELPER?

Did you know YOU could become a Beaver, cubs or scout volunteer and help us to improve the lives of local boys and girls and help them to develop and fulfil their future ambitions.

Leeds & Kingswood Scout Group is run from the Scout Hut located alongside the playing field on the Lenham Road Kingswood. Each section meets one evening a week and carries out a variety of activities both in the hut and outside.

After many years our two cub leaders are retiring and our two scout leaders are moving away having successfully joined the RAF.

We urgently need volunteers, both as leaders and helpers, to ensure the continued success of the group. All training and uniforms are provided and it is an ideal opportunity to develop your own skills and ambitions whilst giving something back to the local community.

I would be delighted to provide any more information you may need to make your decision to join us.

I very much look forward to hearing from you.

Alan Poulton Chairman 01622 843019

SCOUTS UPDATE

I hope you are all well and not too bored.

With the pandemic we are not being able to have face to face contact, so the leaders have arranged meetings via Zoom. This has let the individual sections keep in touch with each other.

Not having the meetings at the hut has given us the opportunity to decorate the hut and freshen it up. As above, we are seeking leaders and helpers for beavers, cubs and scouts. If you like working with children, this will give them your expertise in helping them. If you are interested please give me a ring at the telephone number at the bottom.

For our funds to keep the group running we run a 100 club, we have four prizes a month comprising of £20, 2 x £10 prizes and a £5.

This is £12 a year (£1 a month). If you are interested in joining please call me on the number below. In the mean time stay safe and well and look after yourselves

Alan Poulton Chairman 01622 843019

MY GODMOTHER'S PICNIC SLICE

I have no idea why this is called Picnic Slice but if you like Bounty bars you'll like this! It's a very easy recipe which I'm sure children would love to help with.

225g dark chocolate
55g butter
110g castor sugar
110 g desiccated coconut
55g sultanas
55g glacé cherries
1 beaten egg

Set oven at 150C, Gas 2

Melt the chocolate and pour into a 20cm square baking tin and allow to set.

Cream butter and sugar together until light and fluffy. Beat in the egg then add the remaining ingredients and mix well. Spread evenly over the set chocolate.

Bake until lightly brown.

Leave for 10 mins to cool then cut into squares, best done while still in the tin, leave until cold. Store in a cold place

Lesley Mitchinson

It was 11.30pm, on a Monday night in January, that I suddenly became aware of a vehicle hurtling towards the front of my bungalow.

I had been watching the last of a film on the television and, vaguely aware of a car, revving its engine, somewhere in the village.



This was followed by coloured lights on my windows and, a car with engine racing, right there, inches from my bay window. I approached and was just in time to see the car mount my lawn, cross in front of the house, and off my drive. It then proceeded to hit the pavement and bounce off, out of the street.

I am not the sort of person to be anxious about living alone, but this did unnerve me. The lateness of the hour, the position of my bungalow. I felt it was too late at night to speak to neighbours.

Therefore, after an unsettled night, I determined to report the incident to the police. I telephoned the 101, non-emergency police number. Unfortunately, you do have to listen to the recorded voice trying to get you to go online, but I was undeterred. I was angry about what had happened, and I wanted to speak to a “real person”.

Finally, I spoke to a genuinely nice young woman, who was sympathetic and helpful. I was given a reference number and advised, that if anybody else wanted to report the same activity, they could quote this number and all incidents would be processed together.

The next day on speaking to my neighbours I found they had captured footage on a doorbell camera. They also mentioned that there had been references to this joyriding on the Broomfield website. The video was passed to the police but, unfortunately, you could not see the number plate of the car.

What I found equally annoying, was that nobody else reported it to 101. There were 4 or 5 comments from residents, but, as far as I know, nobody did anything about it. This gives the impression, that nothing antisocial happens in Kingswood & Broomfield. Therefore, we don't need any policing and services get cut. It did not cost me anything to report it, except 10 minutes of my time. The police person was polite and understanding. They did not make me feel that it was not worth reporting. It made me feel reassured. I then spoke to our PCSO, who was helpful. However, all too often people DO NOTHING, and nothing gets done.

Sue Chambers

Kingswood and Broomfield Village Hall

On the Village Hall Committee we have our eyes very much to the future when life will hopefully return to normal (whatever that is!).

Throughout the lockdowns the Preschool has valiantly kept running under strict rules as was permitted, and our thanks go out to their committee and manager for their hard work all this time.

We have had to put various protocols into place which will probably have to remain for the foreseeable future and also have a new cleaning regime. However we trust that later in the year we will be able to welcome all our groups back and get village life started up once more.....here's to a great summer!!



Beryl Andrew.



Broomfield and Kingswood Birdwatching Group

Dear Fellow Residents

In optimistic anticipation of an easing of lockdown in 2021, subject to the vaccine of course, I am taking the first steps to set up a parish birdwatching group. Having moved to the area a few years ago now, I have come to realise how lucky we are to have such a rich diversity of habitat on our doorstep. I have also noticed from social media, a keen interest in nature from many local residents.

The aims as I see it are (but not restricted to) as follows:

- To map (as far as possible) the breeding/migrating/wintering species in the parish
- To arrange group walks
- To share knowledge
- To hold regular meetings
- To note other forms of wildlife in the area

To be honest, the exact model can be fleshed out as we go; these are just initial thoughts.

So, with that in mind I am simply seeking expressions of interest at this stage and will take it from there.

If you are interested, please email me as below:

Mattmeek72@hotmail.com

Best wishes for a happier 2021 to you all.



ANDALUSIAN CHICKEN WITH SHERRY

INGREDIENTS (Serves 4)

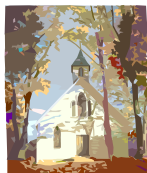
- 1 lemon
- 6 tarragon sprigs
- 2 tbsp. olive oil
- 4 chicken breasts, skinned and boned
- Salt and black pepper
- 8 shallots, peeled
- 4 garlic cloves, peeled
- 75ml dry sherry
- 150ml chicken stock
- 2 tbsp. crème fraîche

1 Using a potato peeler carefully cut the zest off the lemon, making sure you leave all the white pith behind. Cut into thin strips. Squeeze the juice from the lemon and coarsely cut the tarragon.

2 Heat the oil in a large pan. Season the chicken with salt and pepper and add to the pan. Fry on either side for 3 minutes. Remove from the pan. Add the shallots and garlic and fry over moderate heat for about 5 minutes, stirring.

3 Stir in the lemon zest, tarragon, sherry and chicken stock. Stir well, scraping up any bits from the bottom of the pan. Season and stir in 1 tablespoon lemon juice. Bring to the boil; return chicken to the pan.

4 Reduce the heat to low, cover the pan and simmer for 15 minutes. Remove the chicken from the pan; cut into thick slices and keep warm. Stir the crème fraîche into the sauce and bring back to the boil. Boil rapidly until reduced and thickened. Season again. Serve the chicken with the sauce.



Kingswood Church – Spring Edition

Spring is a great time of year, the days are getting longer, the weather is getting warmer and the six nations rugby is on the TV! But before getting too carried away with this year, a quick look back to the end of last year.

Since the last Newsletter, and despite the pandemic, we managed to celebrate Christmas with an online Christingle Service on 20th December where 50 Christingle bags were distributed, which included an orange, candle, ribbon and sweets, to make a Christingle during the Service. There was also a Nativity Trail around the village which told the Christmas story in a five-part series. This culminated in our traditional Family Service on Christmas Day.

We have not held any services since Christmas but are looking forward to restarting after lockdown and when it is safe to congregate together as a Church family. We are currently discussing what Services to hold over the Easter period, both on-line and in person, and hopefully will be able to meet in person for Palm Sunday (28th March), Good Friday (2nd April) and Easter Sunday (4th April).

It is with great sadness that I report the death of John Baldock at the end of January. John was loved by all and had been a member of the Church since moving to Kingswood, with his wife Audrey, 33 years ago. John was a great lover of cricket and so at the age of 95 I think we would say that he had a good innings! Our love and prayers go to his son Martin, daughter Katy and all the family. It is hoped to have a celebration of John's life later in the year when restrictions permit.

We have just entered the season of Lent where Christians remember that Jesus was in the wilderness for 40 days where he was tempted by Satan. It may feel, in this period of lockdown, that we have been in such a wilderness for almost a year. And yet, whilst this period has been extremely hard, with the loss of family and friends, we have many things to be thankful for. I recently attended the Medical Centre in Harrietsham to receive the vaccination and was amazed to witness the dedication of the team of volunteers in the freezing cold guiding me to safety. I would also like to mention Prabar, Sankita and the wonderful team at Avenue Stores who have kept us with food and essential supplies throughout the pandemic and in our arctic conditions. Thank you Tracey, Chris and Kevin!

Our supporting Anglican, Methodist and Baptist churches continue to provide great online worship through YouTube, Facebook and Zoom. We have just finished studying Genesis through an online Bible Study and during Lent our supporting churches are running an 'Alpha Course' and 'Walking with Jesus during Lent' series.

It is traditional during Lent to give something up but having given up so much over the past year we might instead want to resolve to continue to love God and our neighbours as much out of lockdown as in lockdown.



On behalf of the Church, may I wish you a very Happy Easter!

Peter Roberts, Kingswood Church
peterjohnroberts@hotmail.com

KINGSWOOD WHIST GROUP

We are all pretty fed up with the awful pandemic!!

If Boris's Roadmap goes to plan we should be back to some sort of normality by the end of June. With that in mind we hope to restart our weekly sessions some time in July so watch this space!

Let's all keep our fingers crossed that it happens. When we do meet it's every Tuesday afternoon from 2pm until 4pm in the Village Hall. The Group is ever expanding and we attract players from neighbouring villages. Over 20 players usually come along and enjoy 24 games of partner/progressive whist. At half-time we have tea, coffee, cakes and chat!

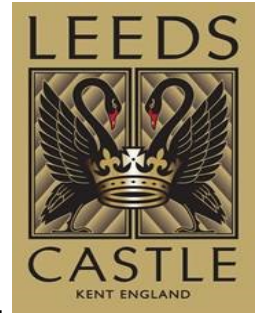
We welcome new players of any vintage so please come along for a really enjoyable sociable afternoon - all for just £2.50!! The members take it in turns to provide the cakes and modest prizes.

No card sharps allowed, just folk who want a fun afternoon!!

For further information please ring Mike on 844272 or email me at mbean58@btinternet.com to register your interest.



As the New Year arrived, we found ourselves in another lockdown. At Leeds Castle the impact has resulted in us needing to remove picnic benches from the estate as currently taking exercise does not mean we can sit and eat. Additionally, we are encouraging people to only visit us if they are doing so from our local area. I am currently working on some visitor postcode analysis and in the last 10 months most of our visitors have been local – so a big thank you from us for your continued support during 2020.



The Board of the Leeds Castle Foundation announced this week that Helen Bonser-Wilton has been appointed as our new Chief Executive. Helen is currently Chief Executive of the Mary Rose Trust in Portsmouth, where she has led its transformation from long term project into a successful and sustainable business. Helen succeeds Sir David Steel, who left us in March last year to become Governor of Gibraltar. During the intervening period our Finance Director, Robin Richman, has led the team successfully through an unprecedented period of challenge created by the pandemic. My personal thanks go to Robin for his support and leadership. Helen has said that she is *'delighted to be joining the team at Leeds Castle and to have the opportunity to drive forward a strategic vision for this astonishingly beautiful and much-loved heritage site.'* No doubt she will have the chance to write in this magazine once she arrives in March.

As I walk round the estate today I am once again amazed by the skill and dedication of our grounds and maintenance teams. In the space of the last 24 hours they have needed to deal with two water leaks and a ruptured gas pipe – men are knee deep in small muddy 'swimming pools' as they fight against the water pressure to find the cause of the leaks. The recent wet weather has also caused some flooding in the Princess Alexandra Gardens and parts of the Woodland Walk which has meant more staff resources being diverted to standing knee deep in freezing cold water! It makes me reflect on the last 10-11 months and how dedicated a much-reduced team has been and how proud we all are of them.

December was a strange month on the estate. We usually welcome around 11,000 visitors each weekend to the Christmas markets but last year didn't feel as quiet as we thought it would be. Yes, we restricted numbers and continued to use our reservation system to make sure visitors were spread across the day, but we still managed to host 36,000 visitors in a very safe way and make sure that they enjoyed their visit.

Unfortunately, 2021 will continue to bring us challenges. Booking and rebooking weddings must be very frustrating for the eager couples. Restrictions have a huge impact on those trying to arrange their nuptials and I know that some are choosing to move their date for a second time.

The constant moving of wedding dates not only presents challenges for the operational and sales teams here but also our Head of Estate Services. Planned autumn and winter stonework programmes have had to be moved to accommodate new wedding dates and at times it feels like we are playing a virtual game of *Buckaroo!* Luckily we have an extremely experienced team here and I am certain that things will settle and weddings will go ahead in due course.

That's all for now so please take great care and stay safe.

Shane Guy, Head of Operations

NAME THAT FLOWER

1. One in the eye for the girl ? 2. Got up? 3. Please remember me ? 4. Fashionable Feline?
5. Cunning animal's hand warmer ? 6. Bovine error? 7. Wed precious metal? 8. Spring month?
9. Sad ringer ? 10. Vehicle State ?

POSTCARD CORNER

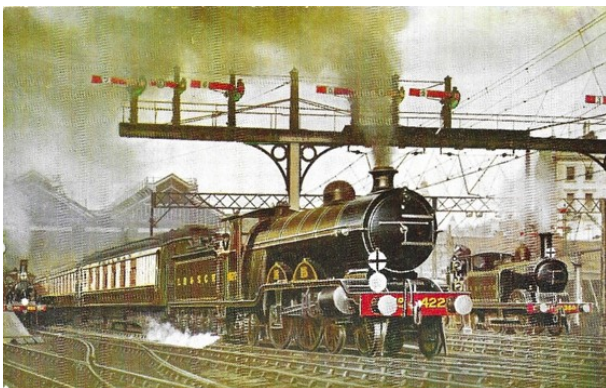
STEAM TRAINS from AROUND THE WORLD

by Ron Kemp



As the dominant mode of transport in the Edwardian years, steam power was covered by postcard publishers of the time. Here are a few examples of steam trains depicted on old postcards from France, the USA and the UK.

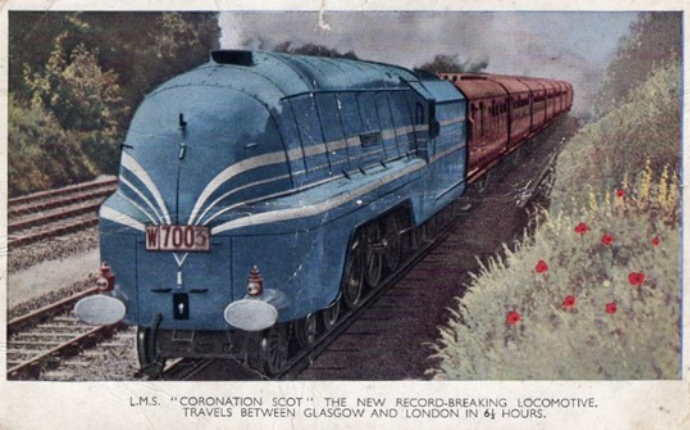
The postcard above shows a steam train powering its way from Cannes station in France at the early part of the 20th century. It was published by Neurdein Brothers (ND) from Paris.



An artist drawn postcard showing the London Brighton and South Coast Railway service "Southern Belle" steaming away from Brighton station.

A stunning posed photograph of a steam train in Privas, France (in the Ardeche area) by Paris publisher J Levy & Sons (LL). A typically arranged shot using the local children and their bikes to enhance the scene, this was taken in 1914.





The Coronation Scot was a streamlined, powerful train used by the London, Midland and Scottish Railway company on the London to Glasgow route.

Coronation Class locomotives were used for the service. The first five were originally painted blue with silver lines; the next fifteen were crimson and gold

Crossing the Forth Railway Bridge is A4 Pacific Locomotive Number 4498 and its rake of carriages en route for London. Used by the London and North Eastern Railway, the streamlined engine is from the same stable as A4 4468 Mallard which still holds the speed record at 126 mph for a steam train.



Pulling a large train of logs, this 2-8-2 steam locomotive is a Mikado built by the American company Baldwin Locomotive Works and owned by the Siler Logging Company in 1924.

HEADCORN BOWLS CLUB

ROY HOOKER PAVILLION, MAIDSTONE ROAD, HEADCORN, TN27 9RL

Come and join a friendly club, no experience necessary. Participate in playing bowls on the best green in Kent. Bowls is a healthy, fun and affordable sport, which is quick and easy to learn.

Just bring flat shoes or trainers and learn the basics. Initially equipment is available.

Upon joining, the club offers friendly and competitive matches and social events. Make new friends

FREE COACHING FOR NEW MEMBERS-

Contact the Secretary -Denise on 01622746081

Visit our Website -www.headcornbowlsclub.hitssports.com



Broomfield & Kingswood Parish Council's support of Heart of Kent Hospice gives people with a terminal illness relief from their physical symptoms and emotional distress and comfort to those who are most important to them.



Last year 1703 people received care from the hospice and 7 of them were from Broomfield & Kingswood Parish. Right now, we are supporting nearly 900 patients and their families which is the largest caseload than ever before in our 29-year history. Sadly, we were anticipating this increase in referrals because so many people were unable to get an early diagnosis of their illness or the treatment they need during the pandemic.

Heart of Kent Hospice has had to adapt some of the ways it delivers its care because of COVID-19 but has worked to ensure the quality of care is not affected.

The Inpatient Unit has always allowed any number of visitors, including the family pets, to come at any time and to stay for as long as they wish - but sadly this is currently not possible which is hard for many families to bear. To help patients and their families to feel as close to each other as possible despite the physical separation, the Hospice has created a Family Liaison service. Healthcare Assistants share the role, taking it in turns to spend a day keeping patients entertained and positive and helping them to keep in touch with their families by video call, for example.

Video calls were trialled early during lockdown by the **Hospice Community and Dementia Teams** as a safe way of carrying out clinical assessments and supporting patients at home. Wherever possible, these are now the preferred means of communication because much more information can be gathered than is possible with a phone call. For people with dementia, video calls are especially helpful because it means they can get to know the faces of the team rather than being alarmed by a visitor wearing full PPE.

For many vulnerable people shielding in their homes, their contact with the outside world has diminished even further. Those who are matched with one of the Hospice's **Compassionate Neighbours** know they have someone to offer them a listening ear. Sometimes they may find it easier to talk to a Compassionate Neighbour about a problem because they don't want to burden family or old friends. Their health, wellbeing and happiness improves because of the companionship and a renewed sense of being a valued part of their community.



It has certainly been an unusual start to the year for 2021, but Kingswood pupils, parents and carers, and all staff really have given their all during this difficult time. We could not be more proud of the hard work and efforts they have made.

I just wanted to take this opportunity to say 'thank you' to everyone and we cannot wait to see everyone back this term. We are also hopeful that the rest of this year may see us come together all that little bit more.

Keep safe and connected.

Mrs Sanchez Daviu



PUZZLE CORNER ANSWERS

POP THE QUESTION:

1. The Monkees 2. The Foundation 3. Traffic 4. Eagles 5. Wet Wet Wet 6. Boyzone

LET ME THINK:

1. An hourglass 2. the Match 3. If you take the first letter of each word and place it at the end, it'll spell the same word backwards

NAME THAT FLOWER:

1. Iris, 2. Rose, 3. Forget-me-not, 4. Dandelion, 5. Foxglove, 6. Cowslip 7. Marigold, 8. Mayflower, 9. Bluebell, 10. Carnation

HOLLAND & HOLLAND ROOFING LTD

Flat Roofing Specialists

“Installers of high performance flat roofing systems”

Our quotes are free of charge and arranged at a time that's convenient for you

Contact

T: 01622 842 069

E: office@hollandandhollandroofing.co.uk

W: www.hollandandhollandroofing.co.uk

Members of the Confederation of Roofing Contractors (CORC)



Pest Purge Ltd



For all your pest problems

Rats, Mice, Squirrels, Bedbugs, Fleas, Wasps,
Rabbits, Fox, Birds, Cockroaches and Moles
No job too small, same day support

Talk to your local, friendly Pest Control business

Call

01622 842481

or

07758 615101

richard@pestpurge.co.uk



Shukokai Karate Academy England

We are proud to confirm that the Academy's karate classes have continued throughout 2020 and into 2021. As soon as the first Lockdown in March 2020 was announced, classes immediately transferred onto the Zoom platform with up to twelve classes a week, all well attended. Students adapted very quickly to the new method of training and it gave them the opportunity to hone their basic techniques, combinations and kata. Once it was permitted to train in limited groups outside again, we were lucky enough to start classes up in Kingswood, Hollingbourne and Sutton Valence. This gave students the opportunity to continue with their training and work towards their next grading belts. We only had one occasion during the whole Summer where our classes were interrupted by bad weather and even then, students returned to continue as soon as the rain passed. Once we were able to return to indoor training, we did so at all of our dojos, including Kingswood Village Hall, where we had strict COVID safe protocols in place. Whilst this limited the numbers allowed in classes, it did not deter students from putting all their energy into their training and new students also joined the club. Sadly, once Lockdown 2 started, we had no option other than to go back onto Zoom but again student numbers were maintained and considerable progress was made by everyone. We returned briefly to some indoor training just before Christmas at one of our venues but since the beginning of the year we have again maintained a significant number of classes on Zoom. We have also had the opportunity to hold online seminars with nine time World Champion and Norwegian National Coach Wayne Otto, World Champion Jordan Thomas and Portuguese National Kata Coach Ema Fernandes.

We are also very proud to announce that Sensei Katie Simpson has been appointed by the English Karate Federation as an Assistant Regional Kata coach for the Southern Region. Sensei Chris is currently undertaking a virtual 1,083 mile walk from Land's End to John O'Groats to raise funds for Diabetes UK, MIND, Great Ormond Street Hospital and our own SKA Fundraising Group. He is currently 375 miles into the walk, details of which can be found at www.justgiving.com/crowdfunding/chris-simpson-lejog.

We are hopeful that in late March we will be able to return to outdoor training and then in April indoor training for the under 18s and in May indoor training to include adults. We are extremely grateful to the Broomfield and Kingswood Parish Council and The Village Hall Committee for all their support during then last twelve months.

As well as Kingswood the Academy will be resuming classes at five other different venues, Downswood, Lenham, Sutton Valence, Marden and Maidstone YMCA, and once a member of the Academy students can train at any of the venues in an appropriate class – beginners are always welcome. Full details and booking pages can be found at our website www.shukokaikarateacademy.com or via www.kentkarate.co.uk or be contacting us on 07801 639052 or email kentkarate@gmail.com.

Sensei Chris and Sensei Katie Simpson. Joint Chief Instructors - Shukokai Karate Academy England.

PEOPLE AND PLACES IN PROFILE

The Len Valley and Beyond

A young couple strolled through the country lanes of Kent in July 1931, searching for the perfect house. Twenty-five-year-old Herbert Bates and his fiancé Marjorie (Madge) Cox had resolved to escape the factory town of their birth for a life in the pastoral beauty of rural Kent. Their wedding was set for later that year and time was running out to find a suitable home.

Herbert Ernest Bates was born the son of a shoemaker in the midland town of Rushden. On leaving Kettering Grammar school aged sixteen in 1921, he worked for a short time as a reporter for the Northampton Chronicle – a job he disliked intensely. With ambitions to become a writer, but lacking the financial resources to do so, Bates returned to Rushden taking a job as a clerk in one of the town's many shoe factories. During the working day he began to secretly write his first novel; in the evenings he walked for miles in lanes, fields and woodlands surrounding the once small market town, drawing inspiration for his writing and deepening a life-long love of the English countryside.

His employer's discovery of Bates furtive writing sparked events that forever changed the course of his life. His father's reaction, on hearing his son had been sacked, was to agree to support him for one year providing he finished the book and secured a publisher. Relieved and motivated, Bates continued work on *The Two Sisters*, a story inspired by an oil lamp burning in the window of an isolated cottage. Nine publishers rejected the manuscript before it came to the notice of Edward Garnett, literary critic and promoter of the writers Galsworthy, D. H. Lawrence and Conrad. *The Two Sisters* sold well, giving H.E. Bates (he dropped the name Herbert) the financial foundation needed to write full-time at the age of just twenty-one.

On that summer day in 1931, the budding author (two further novels and several short stories had been published) was determined to find the right house to fulfil his rural idyll. A light summer rain fell as they entered the village of Little Chart and saw a cottage for sale close to the village green. Disappointed on viewing the dismal interior they attempted to leave... then the owner suggested an alternative:

"We followed him across a rough pasture beyond the cottage and saw a derelict granary", Bates wrote in his autobiography, "stone, weatherboard and tiled, it stood in an acre of flooded farmland, open to the winds on the ground floor and littered with straw and grain upstairs. Suddenly the sun came out and we realised the building faced due south. In that moment of warm sun-light we both knew that this was it." Over the next ten years the couple converted the granary, turning it into a fine house where their four children, born during those years, grew up. Bates and Madge also became expert gardeners, creating an English country garden which he described as being "rather like a woman – all curves, secret corners, unexpected deviations and seductive surprises".

During the 1930s Bates' reputation flourished as a writer of bucolic short stories and novels. Graham Greene compared his stories to those of Chekov, his novel *The Poacher* about the life of an agricultural labourer was widely praised, and *My Uncle Silas* was enjoyed for its earthy, satirical humour. But it was World War II that established H.E. Bates' enduring fame.

Born in 1905, Bates was past the age of call-up in 1940. Instead, he was recruited by the Air Ministry, joining a group of poets, painters, photographers, cartoonists and writers commissioned for morale and propaganda purposes. Bates was tasked with touring South of England Fighter and Bomber stations, interviewing pilots from Belgium, France, Czechoslovakia and throughout the Commonwealth; together with British pilots they formed "The Few" in Britain's battle against the Luftwaffe's threatened invasion. His brief was to write-up these interviews as a series of morale boosting stories, to reassure the public that Britain did not stand alone at this crucial time. Published as *The Greatest People in the World* and *How Sleep the Brave* by Flying Officer X, they were exceptionally successful, selling over two million copies. Then came *Fair Stood the Wind for France*, which followed the survival challenges of a Wellington Bomber pilot stranded in German occupied France. After a posting to the Far East, Bates novelised the British experience in war-time Burma, penning *The Purple Plain* and *The Jacaranda Tree*. All three books were international bestsellers.

Post-war, the author planned to develop a long-held ambition to fictionalise aspects of fruit and hop growing rural Kent. Concepts abounded but he needed a hook. Then one day in 1957, he and Madge set off from Little Chart, driving through apple orchard country towards Sittingbourne. Stopping at a village shop, they saw a large family burst out, mouths filled



with crisps, sweets and enormous ice-creams. Dad pocketed his wad of rubber-banded bank notes while his rosy-faced wife herded the six children into a rusty blue truck. Shouting and laughing, the jolly family drove off towards the open road. As Bates watched this scene unfold, the bright light of inspiration struck.

Based on the family observed that day, *The Darling Buds of May* (its title taken from Shakespeare's Sonnet 18) was published in 1958. The raucous Larkin clan joyfully feast, drink and enjoy their way through life on their strawberry smallholding, trading farm animals and selling scrap. Somehow there is always cash with which to indulge their passion for horses, flashy cars and fancy furniture – possibly a perk of Pop Larkin's skill in dodging taxes and avoiding red-tape interference in his dubious business deals. Hugely popular in Bates' lifetime, *Darling Buds* became legendary through a television adaptation filmed in Pluckley and produced by his son Richard, seventeen years after the author's death at Little Chart in 1974. The comedic escapades of H.E. Bates' loveable Larkin family delighted audiences world-wide.

Christina Wight



Kingswood Fencing

Est 1978

• Domestic • Industrial • Security

All Fencing Supplied and Erected

The Oaks, Lenham Road, Kingswood,
Maidstone, Kent. ME17 1LU

Mobile: 07711 795582
07961 778935

www.kingswoodfencing.co.uk

FEBRUARY 2021 SNOW IN KINGSWOOD



A.C. AUTOS

Motor Vehicle Repairs & Servicing

Air Conditioning Specialist

MOTS arranged or fix your MOT failure

Adam Wise 07958 620684

Trust / Quality / Expertise / 35 Years Experience

Give me a call to discuss how I might help

Established in 2004. Fully insured.
Only new parts with warranty used
Family home in Charlesford Avenue, Kingswood



For all your
Car & Van servicing & Repair
We can service all new cars
under EEC Laws,
and still maintain your warranties.

MOT Class 4,5L & 7
Loan cars & vans available

Open Monday to Friday
8:00 – 18:00
01622 842445 or 01622 844844

ALAN POULTON

Carpets & Vinyl's Supplied & Fitted
Choose in the comfort of your home

Free Estimates

Over 35 Years Experience

Member of the NICF



01622 843019

Chris Lockhart FCA

ICAEW Chartered Accountant

Kingswood based accountant providing services to
small businesses and tax-payers.

If you need help with or advice on:

- *Limited company accounts and tax returns
- *Self-employed accounts
- *Self-assessment income tax returns
- *Payroll and VAT
- *Cloud Bookkeeping
- *Taxation generally

please contact me for a no obligation discussion

I also provide accountancy and bookkeeping
training for those keen to do more themselves.

T: 01622 844328 M: 07557 401433

E: chris@cllaccounting.com

You can find out more about me from my website
www.cllaccounting.com



THE RIDGE

NEWLY -REFURBISHED
CLUBHOUSE NOW OPEN



Beautiful 18 Hole Parkland Golf Course

8 Bay Covered Driving Range & Extensive Practice Areas

Memberships Available & Visitors Welcome

Food Served Daily in our Restaurant

Bookings Taken for Sunday Lunch

Available for Private Hire

To Book Please Call 01622 391000

Book online at www.theridgegolfclubkent.co.uk

USEFUL CONTACTS

Kingswood Church	Peter Roberts	01622 843625
KCC Councillor	Shellina Prendergast	shellina.prendergast@kent.gov.uk
KCC Community Warden	Dawn Riach-Brown	07773 397125
Member of Parliament	Helen Whately	020 7219 6472
MBC Councillor	Gill Fort	gillfort@maidstone.gov.uk
Neighbourhood Watch	VACANCY	
PCSO	Shivon De Rose	101
Primary School	Lynsey Sanchez Daviu	01622 842674
Baby & Toddle Group	Aimee Parker	07857 121160
Twinning Group	Sue Chambers	01622 843622
Village Hall	Val Clarke	01622 843110
Village Clubs		
Badminton	Sue Orchin	01622 843626
Bluebells	Beryl Andrews	01622 843431
CANS	Sonya Roberts	01622 843625
Choir	Sue Chambers	01622 843622
Coffee Shop	Beryl Andrews	01622 843431
Dog Training & Cynophobia J	anet Tandy	01622 842209
Karate	Chris Simpson	07801 639052
Kingswood Church	Peter Roberts	01622 843625
Kingswood Pre-School	Katherine Ross	07729 499 508
Tuesday Lunch Club	Pat Lyne	01622 843672
Dance 4 Kent	Stephanie Wood	07898207973
Kingswood Whist Group	Mike Bean	01622 844272
Short Mat Bowls	Mike Tandy	01622 842209
Purple Yoga	Helen	07762 761905
Scouts	Alan Poulton	01622 843019
Parish Council	Pam Bower	07719 317702 / 01622 843741

Your Parish Council

Parish Clerk: Pam Bower, Email: parishclerk@bandkpc.org Tel: 07719 317702/01622 843741

RFO: Jo Gosden, Email: rfo@bandkpc.org Tel: 07761 800693

Councillors:

Tina Clark (Chair)	tinaclark@bandkpc.uk
Gareth Davies (Vice Chair)	garethd1@hotmail.co.uk
Laura Hubbard	laurahubbard@bandkpc.uk
Aimee Parker	aimeeparker@bandkpc.uk
Chris Pink	chriskpink@bandkpc.uk
Ken Pattison	kenpattison@bandkpc.uk
Katherine Ross	katherineross@bandkpc.uk
Ron Kemp	ronkemp@bandkpc.uk
Simon Pearce	simonpearce@bandkpc.uk

Published by Broomfield & Kingswood Parish Council

The views expressed in this Newsletter are not necessarily those of the production team; publication of adverts/articles does not constitute endorsement and we reserve the right to edit. Every care is taken to present articles impartially and neither the Editor nor the Parish Council are responsible for opinions either stated or implied.